

VIVID LIGHT STRIP DYNAMIC WHITE SILICONE

Table of Contents

Specifications	2-4	Mounting Hardware	7-8
Technical Specification	2-3	Aluminum	7
Physical Specification	3	Plastic	7
		Plastic & Aluminum	8
Connectors	4-6	Packaging	8
Snap	4	Testing	9-10
Seamless	5	Certifications	9
Male and Female	6	Fixture Testing	9
Anti-Wicking Ferrule	6	Charts	10
Part Number Naming Convention	6		

Technical Specifications

Light Dimension 0.61 x 0.24in (15.5 x 6mm) 43 LEDs/ft (144 LEDs/m)

Output	W / WW
LED Light	SMD LED Chip
Max Run Length	
Single Feed	49.2ft (15m)
Light Surface	Flat profile 160°
Lumen Maintenance	70,000 Hours L70 @ 25°C : 90,000 L50 @ 25°C 50,000 Hours L70 @ 50°C : 70,000 Hours L50 @ 50°C
Electrical	
Input Voltage	24V DC
Power Consumption	3.66W/ft (12W/m)
Physical	
LED Count	43 LED/ft (144 LEDs/m)
LED Spacing	0.54in (13.89mm)
Cutting Unit Length	3.28in (83.3mm)
Min. Cutting Unit	12 LEDs (1 unit)
Thermal Management	Free air convection
Fixture Connections	End, side & bottom lead wires
Minimum Bend Diameter	1.97in (50mm) (Top Bending)
Temperature Ranges	
Installation	-40°F to 122°F (-40°C to 50°C)
Operating	-40°F to 131°F (-40°C to 55°C)
Humidity	0-95% non condensing
Dependability	
Warranty	5 Year Limited Warranty
Safety	
Certification	Tested to UL & CSA by Underwriters Laboratory for use in USA and Canada, complies with California Title 24 Requirements, Lighting Facts. Exceeds ANSI C78.377A, CE & RoHS Compliant.
IP Rating	IP67 with appropriately rated accessories

Technical Specifications

Available Colors

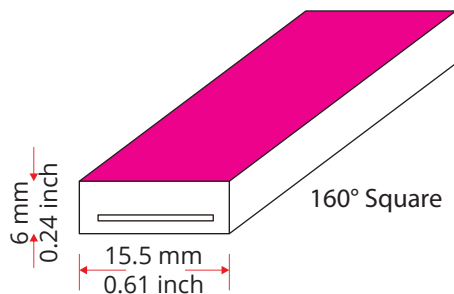
Color	CCT Wavelength
2200K (WW)	2725 ± 145K
6500K (W)	6000 ± 355K
W+WW	3985 ± 275K

Lumen Count

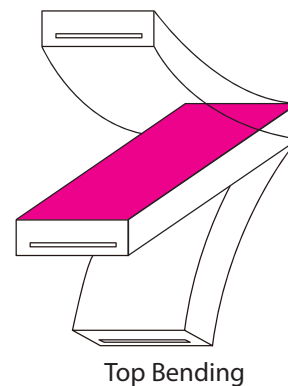
Color	Per Foot	Per Meter	Power/m
2200K (WW)	>97.56lm	>320lm	/
6500K (W)	>125lm	>410lm	/
W+WW	>222.56lm	>730lm	3.66W/ft (12W/m)



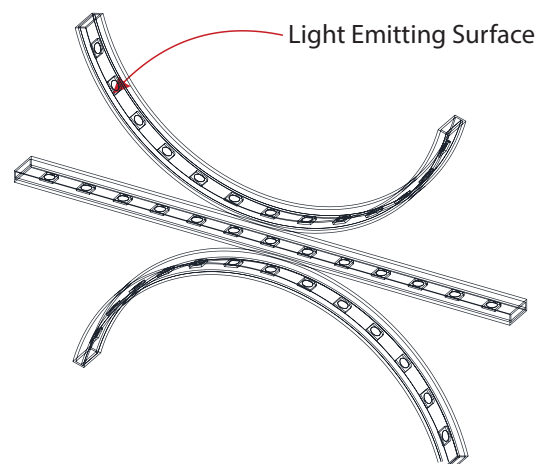
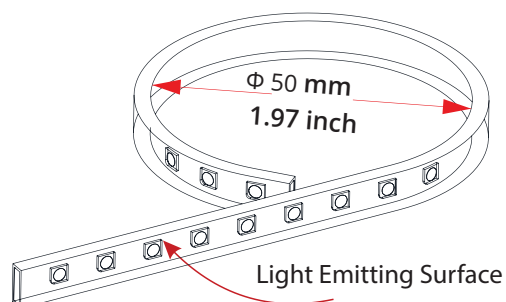
Light Profile



Bending Direction



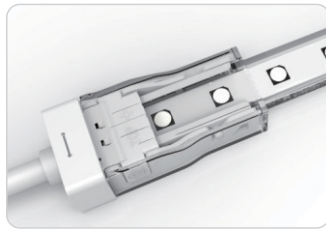
Minimum Bending Diameter



Connectors

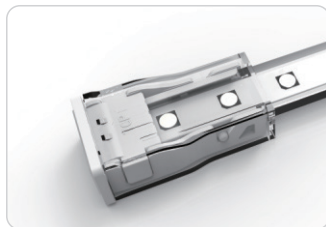
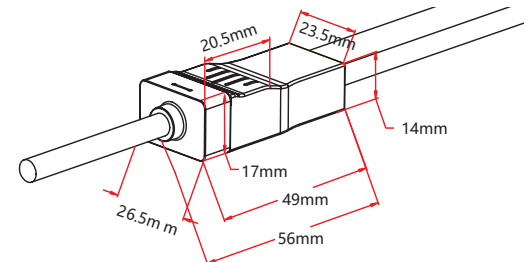
Snap Connectors

IP67: Rated for outdoor use.
Factory Assembly or DIY.



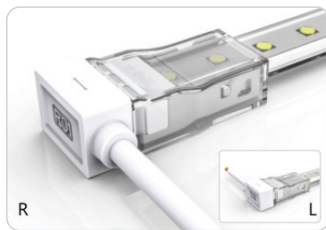
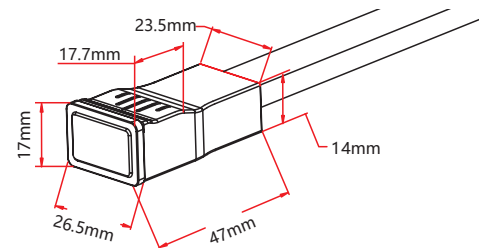
Snap End Exit

LA-15G-I-00-3W-SC-1-EN-XXX-S
LA-15G-I-00-3W-SC-2-EN-XXX-S



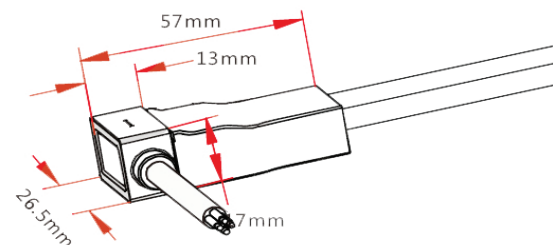
Snap End Cap

LA-15G-I-00-0W-SC-0-EC



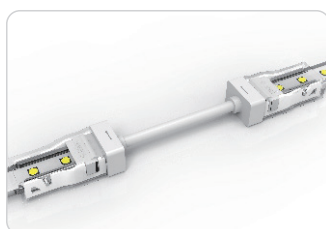
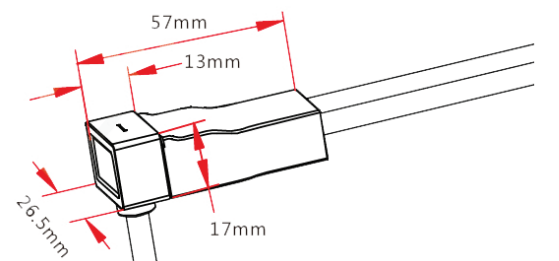
Snap Side Exit

LA-15G-I-00-3W-SC-1-SR-XXX-S
LA-15G-I-00-3W-SC-1-SL-XXX-S
LA-15G-I-00-3W-SC-2-SR-XXX-S
LA-15G-I-00-3W-SC-2-SL-XXX-S



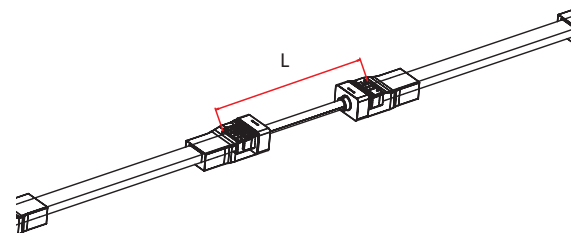
Snap Bottom Exit

LA-15G-I-00-3W-SC-1-BO-XXX-S
LA-15G-I-00-3W-SC-2-BO-XXX-S



Snap Jumper

LA-15G-I-00-3W-SC-0-EJ-XXX-S



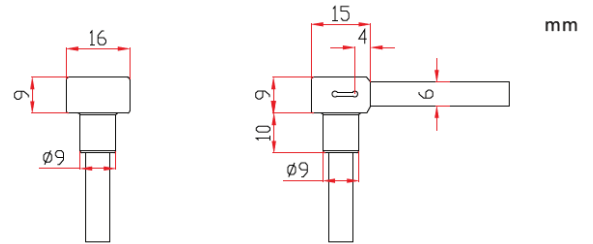
Connectors

Seamless Connectors



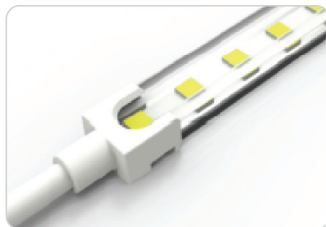
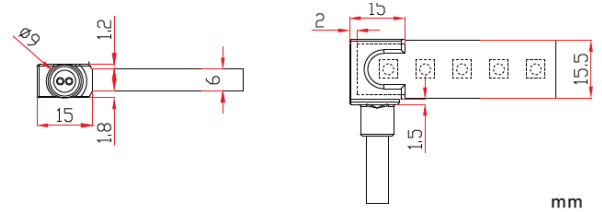
Seamless Bottom Exit

LA-15G-I-00-3W-SE-1-BO-XXX-S
LA-15G-I-00-3W-SE-2-BO-XXX-S



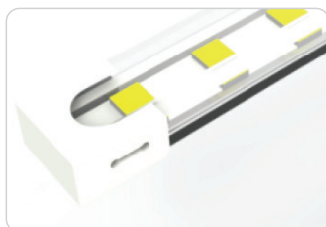
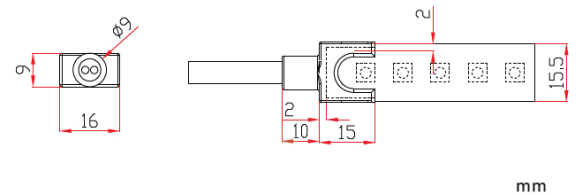
Seamless Side Exit

LA-15G-I-00-3W-SE-1-SR-XXX-S
LA-15G-I-00-3W-SE-1-SL-XXX-S
LA-15G-I-00-3W-SE-2-SR-XXX-S
LA-15G-I-00-3W-SE-2-SL-XXX-S



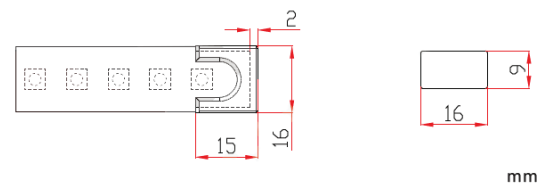
Seamless End Exit

LA-15G-I-00-3W-SE-1-EN-XXX-S
LA-15G-I-00-3W-SE-2-EN-XXX-S



Seamless End Cap

LA-15G-I-00-0W-SE-0-EC



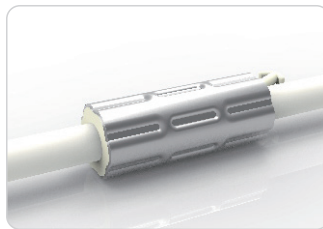
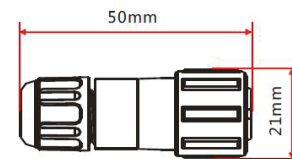
Connectors



Male & Female Connector

- NA-XX-BC-DC-CXX-F
- NA-XX-BC-DC-CXX-M
- NA-XX-BN-XXA-CXX-F
- NA-XX-BN-XXA-CXX-M
- NA-XX-PL-XXA-CXX-F
- NA-XX-PL-XXA-CXX-M

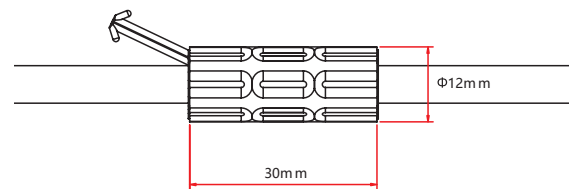
Note: Unless otherwise stated, the tolerance is $\pm 22\text{mm}$.



Anti-Wicking Ferrule

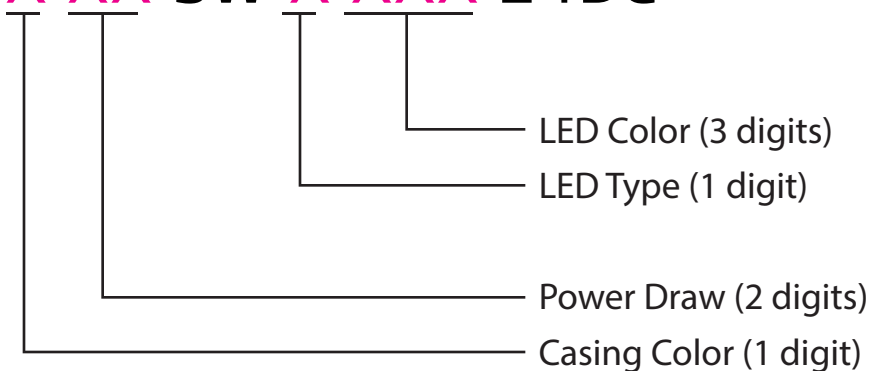
The anti-wicking ferrule is located 115mm ($\pm 5\text{mm}$ tolerance) from the connector cable.

For protection against water ingress inside of cable wire hence damage the light.



Part Number Naming Convention

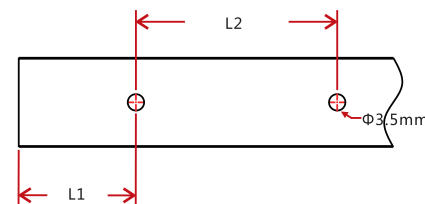
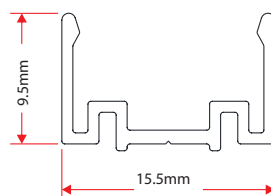
SL-15G-X-XX-3W-X-XXX-24DC



For full part number naming rules, please refer to the document on www.glls.com/support/documentation/

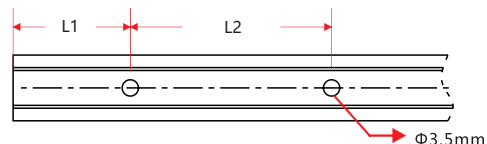
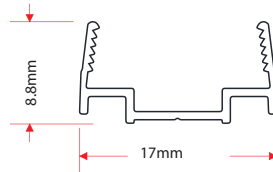
Mounting Hardware

Standard Anodized Aluminum Channel



W x H	Standard Length	Part Number	L1	L2	Screw Hole Φ	Hole #
0.54 x 0.87in (13.8 x 22mm)	1.38in (35mm)	CL-15-R-AL-3C5-SD	0.69in (17.5mm)	/	Φ 0.14in (3.5mm)	1
	19.69in (500mm)	CH-15-R-AL-0M5-SD	1.97in (50mm)	7.87in (200mm)	Φ 0.14in (3.5mm)	3
	39.37in (1000mm)	CH-15-R-AL-01M-SD	3.94in (100mm)	7.87in (200mm)	Φ 0.14in (3.5mm)	5
	78.74in (2000mm)	CH-15-R-AL-02M-SD	3.94in (100mm)	7.87in (200mm)	Φ 0.14in (3.5mm)	10

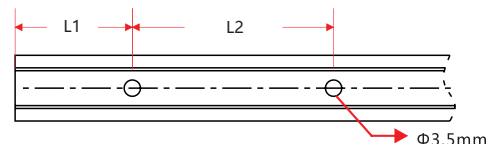
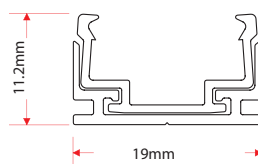
Plastic Channel



W x H	Standard Length	Part Number	L1	L2	Screw Hole Φ	Hole #
0.55 x 0.94in (14 x 24mm)	19.69in (500mm)	CH-15-R-PL-0M5-SD	1.97in (50mm)	7.87in (200mm)	Φ 0.14in (3.5mm)	3
	39.37in (1000mm)	CH-15-R-PL-01M-SD	3.94in (100mm)	7.87in (200mm)	Φ 0.14in (3.5mm)	5
	78.74in (2000mm)	CH-15-R-PL-02M-SD	3.94in (100mm)	7.87in (200mm)	Φ 0.14in (3.5mm)	10

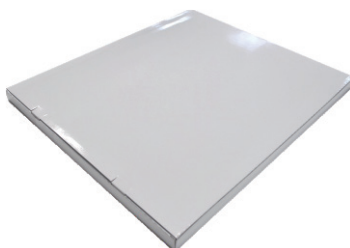
Mounting Hardware

Plastic & Aluminum Channel



W x H	Standard Length	Part Number	L1	L2	Screw Hole Φ	Hole #
0.55 x 0.59in (14 x 14.7mm)	1.38in (35mm)	CL-15-R-AP-3C5-SD	0.69in (17.5mm)	/	Φ 0.14in (3.5mm)	1
	19.69in (500mm)	CH-15-R-AP-0M5-SD	1.97in (50mm)	7.87in (200mm)	Φ 0.14in (3.5mm)	3
	39.37in (1000mm)	CH-15-R-AP-01M-SD	3.94in (100mm)	7.87in (200mm)	Φ 0.14in (3.5mm)	5
	78.74in (2000mm)	CH-15-R-AP-02M-SD	3.94in (100mm)	7.87in (200mm)	Φ 0.14in (3.5mm)	10

Packaging



White Box

Packing Box

Fixture Length	White Box Dimensions	Packing Box Dimensions	# Of White Boxes	Package Weight
393.7in (10m)	13.78x1.65x18.11in (35x4.2x46cm)	18.9x14.57x9.54in (48x37x24cm)	5	15.43lbs (7kg)
787.4in (20m)	20.08x1.65x22.05in (45x4.2x56cm)	22.83x18.5x9.45in (58x47x24cm)	5	26.45lbs (12kg)
1181.1in (30m)	26.77x1.65x28.34in (61x4.2x72cm)	29.13x25x4.13in (74x63.5x10.5cm)	2	17.64lbs (8kg)

Testing

Certifications

	Testing Organization	Certificate Serial N°	Report Reference
UL 2108	UL	20160726-E360029	E347880
CE-EMC	SGS	SZEM1702001259LMV	SZEM160600421302

Fixture Testing

Optical Testing

Spectrum Analysis	IES LM 79 (Lumen, CCT, CRI, XY, SDCM, wavelength)
Photometric Distribution	IES LM 73 (lumen intensity distribution & Lux diagram)
Lumen Maintenance & Lifetime	IES LM84 & IES TM28

Temperature Testing

Normal Temperature Test	UL1598& UL2388 & IEC60598-1 & IEC60598-2-21
Abnormal Operation Test	UL1598 & UL2388 & IEC60598-1 & IEC60598-2-21

Durability Testing

Bending Test	Manufacturer-defined, 500 cycles
Swing Test	UL2388, >750 cycles
Tensile Test	Manufacturer-defined, > the weight of light in max. connection length double feed
Twist Test	Max connection length double feed Manufacturer-defined, >200 cycles
Ball Impact	UL1598 & UL2388 & IEC60598-1 & IEC60598-2-21
IK07 IK08	IEC62262

Environmental Testing

Chlorinated Water Immersion	BG9667, PH6.8-7.6, free chlorine 0.3-0.6mg/L
Salt Water Immersion	IEC60598-1, Salinity 4%
Salt Spray Test	IEC68-2-11
Outdoor Exposure	Manufacturer-defined
Flame Resistance	UL94
UV Exposure	ASTMG 154, ISO 4892-3, UVA @ 340nm
IPX5, IPX6, IPX7, IPX8	IEC60529
Temperature Shock	Manufacturer-defined, -40°C - 60°C (typical temperature range)
Constant Temperature	Manufacturer-defined

Testing

Charts

ANSI STANDARD

Nominal CCT Categories

Nominal CCT	Target CCT and tolerance(K)	Target D_{uv}	D_{uv} Tolerance Range
2200K	2238 ±102	0.0000	Tx:CCT of the source
2500K	2460±120	0.0000	For Tx<2870K
2700K	2725 ±145	0.0000	0.000±0.0060
3000K	3045±175	0.0001	For Tx≥2870K
3500K	3465±245	0.0005	$D_{uv}(Tx)±0.0060$
4000K	3985±275	0.0010	where
4500K	4503±243	0.0015	$D_{uv}(Tx)=57700 \times (1/Tx)^2$
5000K	5029±283	0.0020	-44.6 × (1/Tx)
5700K	5667±355	0.0025	+0.00854
6500K	6532±510	0.0031	
Flexible CCT (2200-6500K)	$T_f^{1)} ± \Delta T^{2)}$	$D_{uv} T_f^{3)}$	

Remark:

- 1) T_f is chosen to be at 100K steps (2300,2400,.....,6400K),excluding the ten nominal CCTs listed in Table 1.
- 2) $\Delta T = 1.1900 \times 10^8 \times T^3 - 1.5434 \times 10^6 \times T^2 + 0.7168 \times T - 902.55$
- 3) Same as in the D_{uv} Tolerance Range.

(X,Y) Chromaticity Diagram

